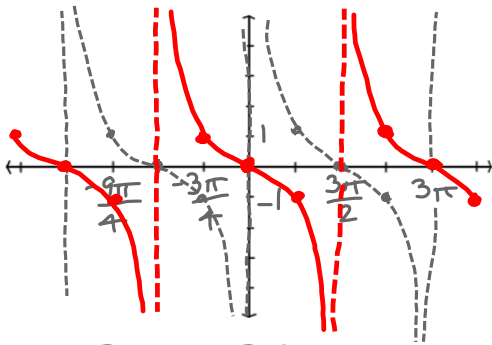


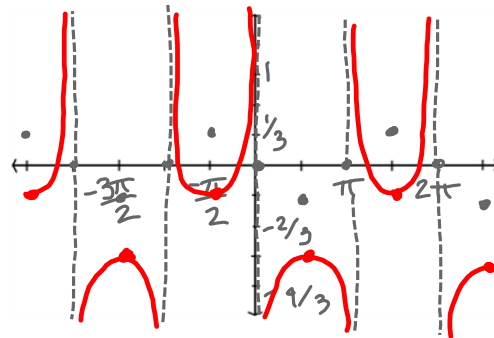
Review: Graph.

$y = \cot\left(\frac{1}{3}x - \frac{\pi}{2}\right)$
 amp: 1
 per: 3π
 h. shift: right $\frac{3\pi}{2}$
 v. shift: none

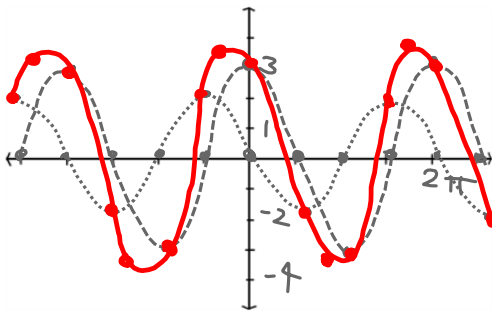


$y = 3 \cos x - 2 \sin x$

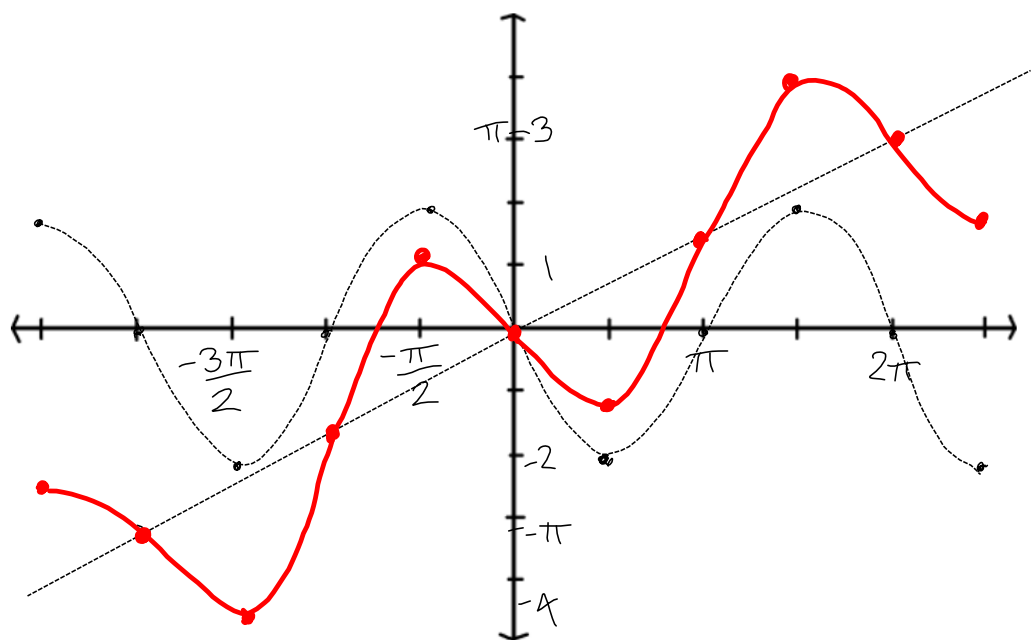
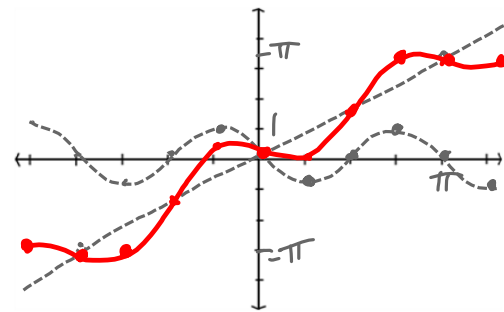
$y = -\frac{1}{3} \csc x - \frac{2}{3}$
 amp: $1/3$
 per: 2π
 h. shift: none
 v. shift: down $2/3$



$y = x - \sin 2x$

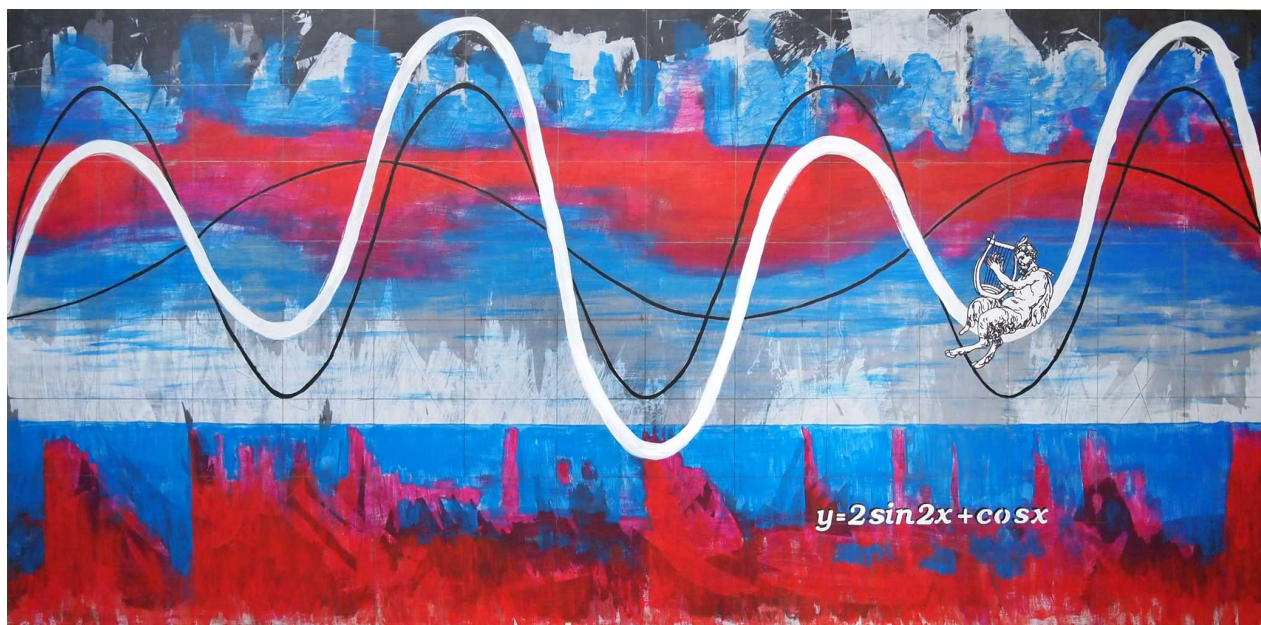
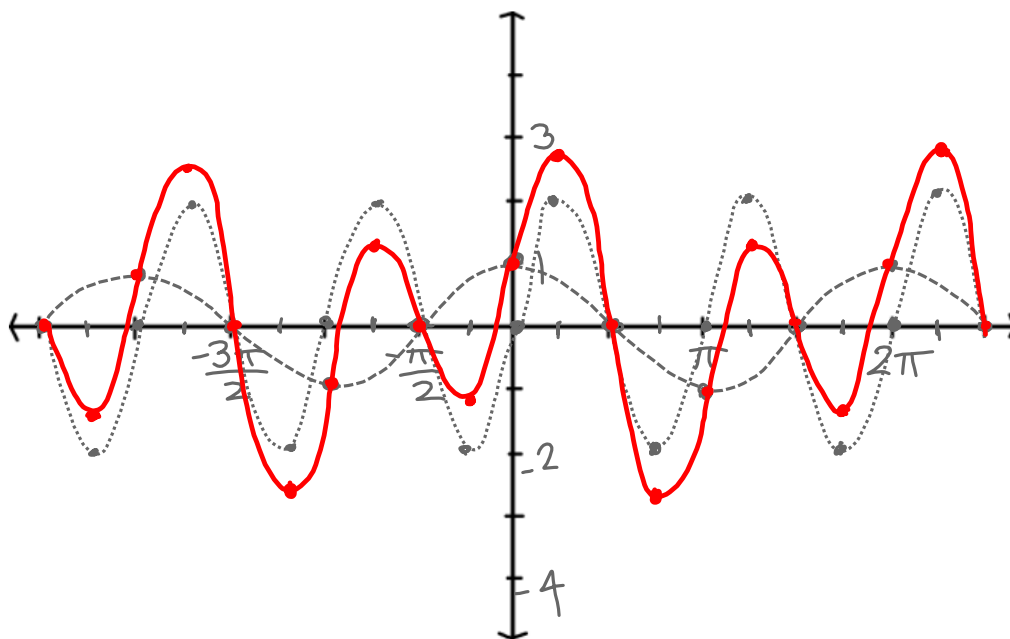


$y = \frac{1}{2}x - 2 \sin x$



$$y = 2\sin 2x + \cos x$$

amp 2 per π amp 1 per 2π



Sarah Brewer
Dionysus: $y = 2\sin 2x + \cos x$
mixed media on masonite
24"x48"
2010

Quiz Time!

Test #2 - Friday, 12/13

HW #5 Due Friday:

- Handout Graphs #49-60
- Test 2 "Practice Problems"
(<http://www.asms.net/brewer/trig/trig-test2reviewproblems.pdf>)

Thursday we will review.